



NORTH COAST RESOURCE PARTNERSHIP

# NCRP CAL FIRE FOREST HEALTH PILOT GRANT

*Regional Screening  
for Prioritizing Forest Health Projects*



# AGENDA

Meeting Facilitator: Karen Gaffney, North Coast Resource Partnership

Please Note: Meeting Will Be Recorded

- Meeting Purpose: NCRP CAL FIRE Pilot/Regional Screening Assessment
- Introductions: Project Team/Presenters + Self-Identification in the Chat (name and affiliation)
- NCRP Overview, Adaptive Planning & Prioritization Framework
- NCRP CAL FIRE Forest Health Pilot: Intent, RFP Process & Schedule, Proposal Support
- Overview of North Coast Regional Screening Assessment & Application to Projects
- NCRP/CAL FIRE Pilot Story Map
  - <https://storymaps.arcgis.com/stories/71fa804c5ac246d399b30cd25f20d227>
- Summary of Input & Responses from February 2024 Workshop
- Partner Questions & Comments (chat or raise hand)





**Source Region:**  
Carbon, Water, Biodiversity



# North Coast Resource Partnership

## Mission, Structure & Principles

- Convened in 2005
- Thriving Communities & Landscapes
- Integrated/Multi-Objective
- Leadership Council: Tribes & Counties
- Tech Committee: Tribes & Counties
- MOMU & Policy Handbook
- Equity, Transparency, Inclusion, Shared Vision, Common Ground
- Western & Tribal Science
- Synchronizing Tribal, Federal, State, Local Priorities
- Planning : Implementation = 10 : 90
- Effective Use of Public Funds: ROI







OVERVIEW

PRIORITIZATION

STRATEGIES

DEMONSTRATION PROJECTS

PLAN IMPLEMENTATION

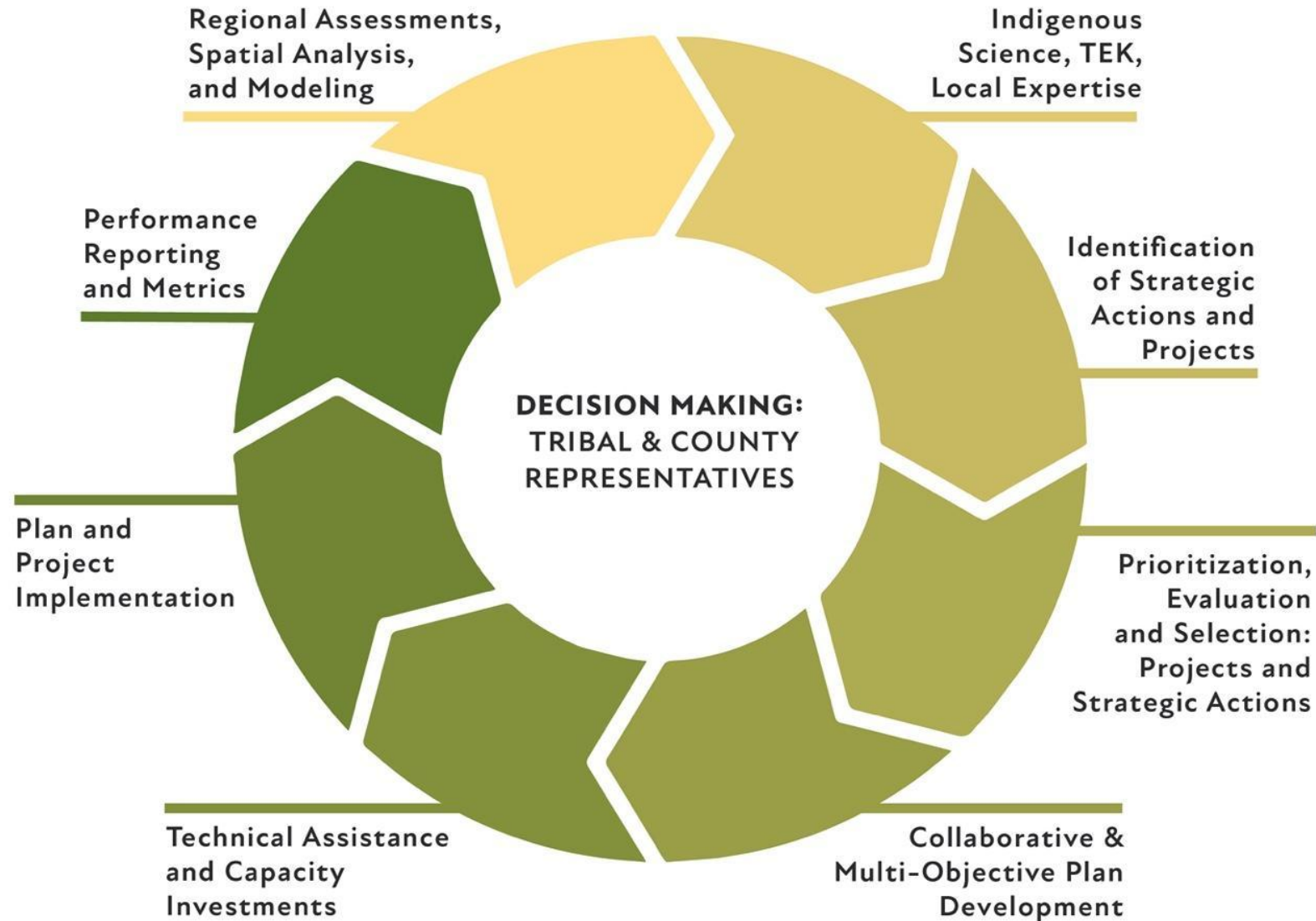


# A VISION FOR NORTH COAST RESILIENCE

---

PRIORITIES FOR ENHANCING WATERSHED,  
FIRESHED, FOREST, AND COMMUNITY RESILIENCE  
IN THE NORTH COAST REGION

# NCRP Adaptive Planning & Prioritization Framework





# Assessments: Communities At Risk

- Investigates North Coast communities' exposure and vulnerability to wildland fire
- Inputs:
  - Burn Probability
  - Housing Unit Density
  - Social Vulnerability Index

## Top 25 North Coast Communities by Annual Housing Unit Exposure

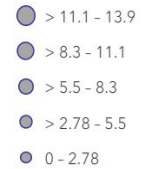
Annual Housing Unit Exposure



## Labels Only

## North Coast Communities not in Top 25

Annual Housing Unit Exposure

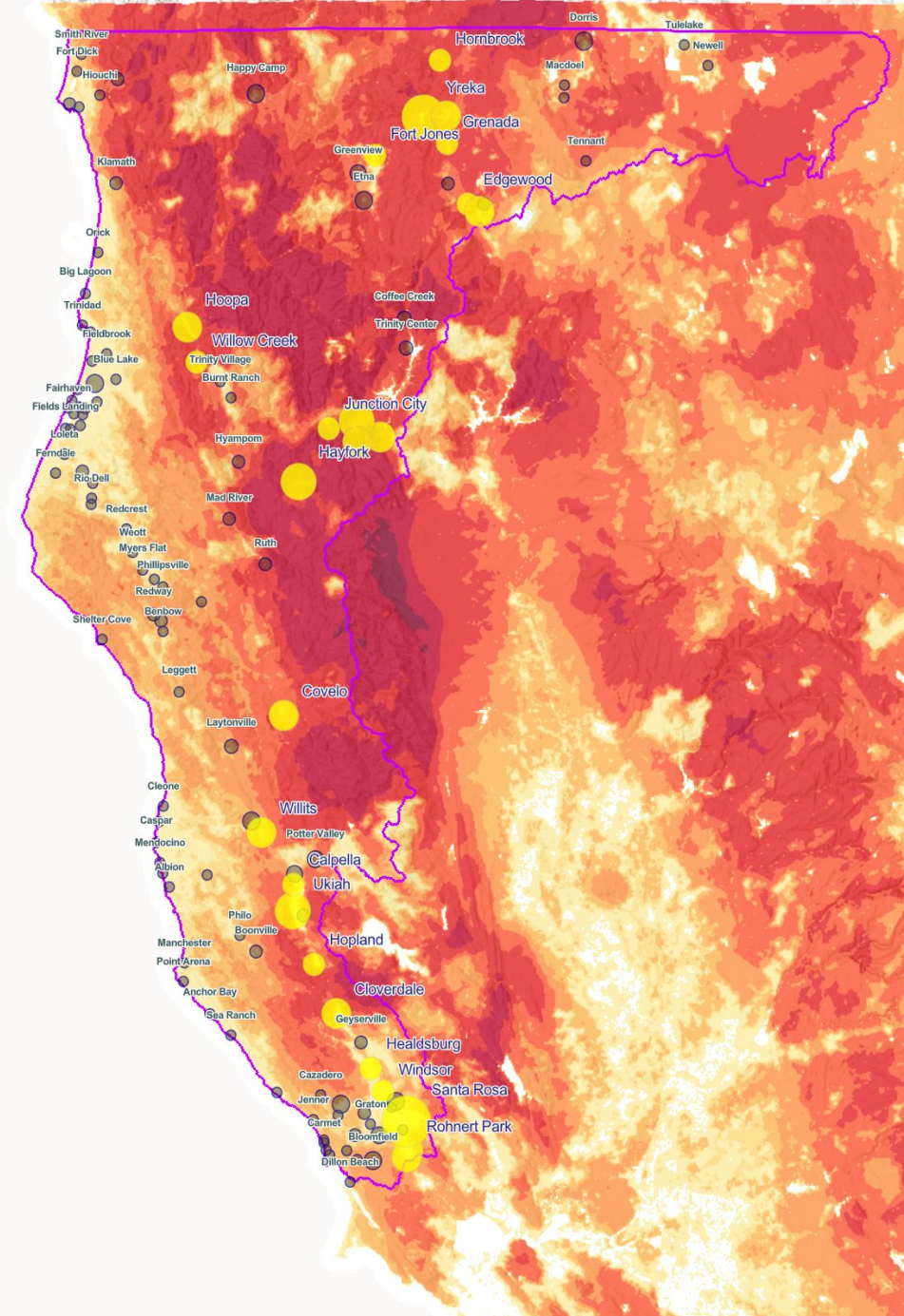
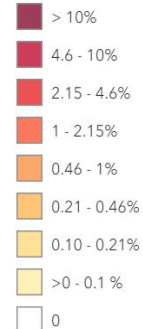


## North Coast Resource Partnership Boundary



## Annual Burn Probability

Annual Burn Probability





# Regional Data & Local Knowledge





# NCRP CAL FIRE FOREST HEALTH PILOT GRANT

- \$10 million grant - CAL FIRE Forest Health Pilot Program
- Pilot is a regional grant model to prioritize and implement a landscape scale portfolio of projects
- Implement Forest Health priorities outlined in the Vision for North Coast Resilience (DOC RFFC Program)
- CAL FIRE Forest Health Categories (see Guidelines, Appendix B):
  - Forest fuels reduction (focus of the regional assessment)
  - Cultural fire
  - Prescribed fire
  - Pest management
  - Reforestation & Ecological Restoration
  - Biomass utilization



# NCRP CAL FIRE FOREST HEALTH PILOT IMPLEMENTATION PROJECT REVIEW & SELECTION PROCESS GUIDELINES & APPLICATION

- ELIGIBLE PROJECT SPONSORS: Tribes, local/state/federal public agencies, universities, special districts, industrial and nonindustrial private forest landowners, non-profit organizations
- FUNDING LIMITS: \$500,000 - \$2,000,000 (projects may be scaled)
- PROJECT SIZE: Projects must be large, landscape-scale projects with multiple, integrated benefits, but may be smaller than 800 acre required by CAL FIRE Forest Health grant
- PROJECT END DATE: December 31, 2028
- Applicants must complete all needed environmental compliance work within 1 year of award; demonstrated progress within 6 months of award
- NCRP may reallocate awarded funds to a different sub-grantee within the project portfolio



# NCRP CAL FIRE FOREST HEALTH PILOT SCHEDULE

- **May:** NCRP CAL FIRE Forest Health Pilot Grant Solicitation announced
- **May – July:** Informational webinars & weekly office hours
- **August 4:** NCRP CAL FIRE Forest Health Pilot Grant Project applications due
- **August:** NCRP Technical Peer Review Committee (TPRC) project review period
- **August 28 & 29:** TPRC project review & selection meeting to identify project portfolio recommendation for NCRP Leadership Council and CAL FIRE review
- **September:** Presentation to CAL FIRE staff; CAL FIRE review & input
- **Sept – Oct:** staff work with project sponsors to address CAL FIRE input
- **Oct 18, NCRP Quarterly Meeting:** LC consider/approve TPRC recommended suite of Priority Projects for NCRP CAL FIRE Forest Health Pilot Project Regional Grant
- **Dec 2024:** NCRP CAL FIRE Forest Health Pilot Regional Portfolio of Implementation Projects (and required documentation) provided to CAL FIRE and CAL MAPPER



# SOLICITATION INFORMATION, MATERIALS & CRITERIA

All materials can be found:

<https://northcoastresourcepartnership.org/ncrp-forest-health-pilot-implementation/>

Guidelines defined criteria (Guidelines, pg 7):

Is the project located within one of the high priority areas identified by the [NCRP Landscape Priority Areas for Forest Health Projects assessment?](#)

OR

If the proposed project is not located within the [NCRP Landscape Priority Areas for Forest Health Projects assessment](#), does the project description thoroughly describe local conditions not captured in the regional screening level analysis (including priority areas for [reforestation, prescribed fire and cultural fire](#)) that would support the prioritization of the proposed project area?



THE PARTNERSHIP THE REGION PROJECTS PLANNING RESOURCES DATA CAL

## NCRP CAL FIRE FOREST HEALTH PILOT IMPLEMENTATION GRANT

With funding from the CAL FIRE Forest Health Program, the NCRP is providing solicitation materials and guidelines to support projects that seek to significantly increase fuels management, fire reintroduction, treatment of degraded areas, and conservation of forests: mitigating climate change, protecting communities from fire risk, and strengthening rural economies.

LEARN MORE





# COMPLETE PROPOSAL ELEMENTS

1. NCRP Project Tracker Project Proposal
2. NCRP CAL FIRE Forest Health Pilot Project Supplemental Application (MS Word form)
3. NCRP CAL FIRE Forest Health Pilot Project Workbook Excel File: Work Plan, Treatment Activities, Environmental Compliance & Budget
4. Supporting Documents:
  - a) Certification of Authority
  - b) Organization Statement of Qualifications that briefly describes the organization's key personnel and their qualifications and list/hyperlinks to examples of relevant work that support the proposal
  - c) Technical & Reference Supporting Document: copies of letters of support, maps, permits, environmental compliance documentation, studies, plans and designs – these should be bundled into one PDF document that includes a Table of Contents and is limited to approximately 50 pages
  - d) NCRP MOMU



# PROJECT PROPOSAL SUPPORT

## WEEKLY OFFICE HOURS – Wed, 12:30 pm

- Zoom meeting
- Real-time question/answer sessions
- Schedule proposal support meetings
- Tribal only break-out sessions with Tribal Engagement support team

## SPATIAL DATA TECHNICAL SUPPORT

- Help with GIS polygons representing proposed project areas and activities
- Information on available GIS datasets
- Contact Mark Tukman  
([mark@tukmangeospatial.net](mailto:mark@tukmangeospatial.net))



Tuesday, June 11, 2024



# TUKMAN GEOSPATIAL

- **Regional Screening Assessment**
- **Story Map**



# FOREST HEALTH PILOT REGIONAL ASSESSMENT - OVERVIEW

- Assessment intended to filter and stratify the landscape through the lens of CAL FIRE forest health priorities
- This approach has been peer reviewed by CAL FIRE and others and will continue to be adapted based on further review by NCRP Ad Hoc, Tribes, federal/state/local agencies, academic and NGO partners, and local project sponsors
- The priority area mapping is intended to be a screening level filter for project sponsor planning
  - Will be refined over time, and project sponsors will have an opportunity to provide a rationale as to why their project is not located in a priority area





# FOREST HEALTH PILOT REGIONAL ASSESSMENT - OVERVIEW

- Fuels reduction treatment model prioritizes areas of existing woody vegetation that:
  - Haven't been recently treated
  - Have either burned at high intensity or not burned at all in the past seven years
  - Don't have low mechanical treatment feasibility
  - Have high burn probability and high predicted flame lengths
  - Are in or close to the WUI
  - Have exhibited high rates of tree mortality in the past five years





# SUMMARY OF INPUT & UPDATES MADE SO FAR

- Received a lot of helpful feedback during and after workshop - full list of questions/comments and responses posted to NCRP website:  
[https://northcoastresourcepartnership.org/site/assets/uploads/2024/05/NCRP-Response-to-CF-Workshop-Comments 5-18-24.pdf](https://northcoastresourcepartnership.org/site/assets/uploads/2024/05/NCRP-Response-to-CF-Workshop-Comments-5-18-24.pdf)
- Changes to Story Map
  - Added context about regional assessment goals and clarified language about project categories
  - Added summaries and information about weights and values
  - Simplified basemaps for easier viewing
- Changes to assessment
  - Combined classes for input values
  - Increased weighting factor for flame length and decreased for fire severity
  - For burn severity, changed cutoff for recent fire from last 10 years to last 7 years
  - Increased lower threshold for tree mortality to receive non-zero value in assessment (> 10%)
  - Potential future updates: adding veg type input, reconsidering fire probability input, and enhancing assessment with lidar-derived datasets
- Story Map draft is available for review: <https://arcg.is/CnDnW>



## **NCRP CAL FIRE Pilot Webpage:**

<https://northcoastresourcepartnership.org/ncrp-forest-health-pilot-implementation/>

## **Vision Plan:**

<https://northcoastresourcepartnership.org/resilience-plan/>

## **NCRP CAL FIRE Forest Health Pilot Grant Proposal Support & Information**

- 
- Katherine Gledhill: [kgledhill@northcoastresourcepartnership.org](mailto:kgledhill@northcoastresourcepartnership.org)
- NCRP Director of Tribal Engagement, Sherri Norris: [sherri@cieaweb.org](mailto:sherri@cieaweb.org), 510-848-2043
- Tribal Technical Assistance Coordinator, Javier Silva: [jsilva9806@gmail.com](mailto:jsilva9806@gmail.com)
- Rose Roberts: [rroberts@northcoastresourcepartnership.org](mailto:rroberts@northcoastresourcepartnership.org)
- Cybelle Immitt: [CImmitt@co.humboldt.ca.us](mailto:CImmitt@co.humboldt.ca.us)
- Karen Gaffney: [kgaffney@northcoastresourcepartnership.org](mailto:kgaffney@northcoastresourcepartnership.org)



# NCRP CAL FIRE FOREST HEALTH PILOT GRANT

## PARTNER QUESTIONS ?



California  
Department of  
Conservation