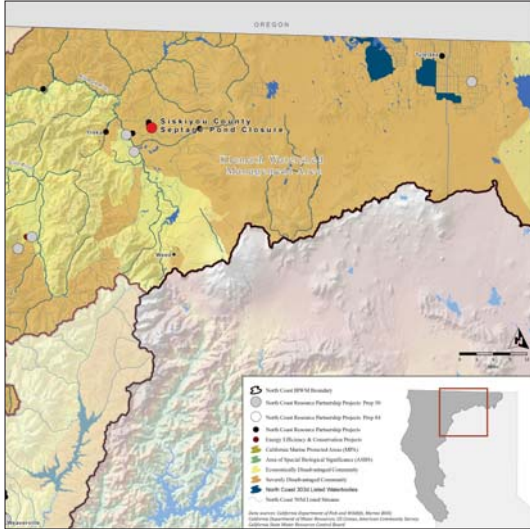


Siskiyou County Septage Pond Closure

SISKIYOU COUNTY



STATEMENT OF THE PROBLEM

Siskiyou County inherited an unpermitted septage receiving facility when it acquired the Siskiyou County Airport from the United States Air Force in the 1970s. The septage receiving facility, which is an unlined pond, receives approximately 750,000 gallons of raw sewage each year from permitted haulers in the County. However, because the facility has exceeded its design life, is situated in an area of shallow groundwater, and lies approximately 900' east of Oregon Slough, a small tributary to the Shasta River and first order tributary to the Klamath River, concerns have been raised about the potential for groundwater and surface water impacts. (Both Shasta and Klamath rivers are 303(d) listed streams affected by organic enrichment and low dissolved oxygen.) Because of these concerns, the County is under a long-standing North Coast Regional Water Quality Control Board (RWQCB) directive to close the facility. Further, in 2009, the Klamath Riverkeeper notified the County and RWQCB of its intent to file a preemptory writ of mandate regarding use of the unpermitted facility. Although the Siskiyou County Board of Supervisors have long been committed to closing the unpermitted septage receiving facility, a lack of sufficient resources necessary to close and properly remediate the site has kept the facility open.

THE SOLUTION

With the award of Prop 84 funding, the Siskiyou County Board of Supervisors has resolved to close the facility by November 1, 2013, with remediation slated to occur during summer 2014. The Siskiyou County Septage Pond Closure project will excavate septage waste and impacted soil from the affected site and relocate it to an impermeable surface on the adjacent airport property where it will be allowed to air dry. It is anticipated that the dried material will then be applied to adjacent County-owned agricultural land that is used for hay production. However, if the dried waste is unable to meet the criteria for land application, it will be transported to a lined landfill for disposal.

PROJECT GOALS

1. Protect ground and surface water quality
2. Ensure access to safe drinking water
3. Protect special-status fish species and habitat
4. Reduce exposure to fines, penalties, and litigation

PROJECT IMPLEMENTATION

The project will consist of the following components:

1. Excavation and drying
 - » Dewater and decant septage waste in situ
 - » Screen sludge for plastics, garbage, and other inert materials
 - » Transport sludge to drying bed and turn to accelerate drying
2. Site remediation
 - » Address any effluent and sampling requirements
 - » Backfill site with native soil and initiate revegetation

3. Disposal

- » Test excavated material to determine appropriate method of disposal
- » If determined safe and appropriate, dried waste will be applied to adjacent county-owned agricultural land
- » If land application is determined to be infeasible, dried waste will be transported to and disposed of at an approved landfill

PROJECT BUDGET

<i>IRWM funds:</i>	\$ 389,775
<i>Leveraged funds:</i>	\$ 130,594
TOTAL	\$ 520,369

BENEFITS

Economic

- Approximately \$150,000 in avoided RWQCB levied fines and/or legal fees

Water Quality

- Elimination of a potential source of water contamination for current and future human use
- Reduced risk of groundwater contamination

Watershed Rehabilitation

- Improved fish and wildlife habitat
 - » By eliminating the ongoing disposal of nitrate and dissolved oxygen content waste adjacent to Oregon Slough, the project reduces potential impacts to critical habitat for adult and juvenile salmonids in the Shasta and Klamath Rivers.

Social

- Resolution of longstanding conflict over the ongoing use of the septage pond, which is a recognized source of potential ground and surface water contamination

Jobs and Local Economy

- Over \$500,000 will be spent locally using local labor and supplies when possible, thus contributing to State goals for environmental justice and social equity
- Avoidance of regulatory fines
- Avoidance of legal fees

NEXT STEPS & RECOMMENDATIONS

Implementation of the RWQCB-approved septage facility closure plan. In addition, Siskiyou County will continue its efforts to protect public health and safety, as well as improve fish and wildlife habitat, through implementation of projects that safeguard water quality.

CONTACT

Greg Plucker, Director
Siskiyou County Community Development Department
806 South Main Street, Yreka, CA 96097
530.841.2100

ACKNOWLEDGEMENTS

Roy O'Connor, North Coast Regional Water Quality Board
SHN Consulting Engineers & Geologists
Katherine Gledhill and Karen Gaffney, West Coast Watershed
Bill Navarre, Siskiyou County Environmental Health Division



NORTH COAST RESOURCE PARTNERSHIP