

Indian Creek Sewer Pipeline Crossing

HAPPY CAMP SANITARY DISTRICT (HCSD)



STATEMENT OF THE PROBLEM

The existing sewer pipeline is exposed in the bed of Indian Creek; there is a high likelihood that the pipeline will fail within 50 years, causing untreated sewage to leak into Indian Creek, which flows into the Klamath River, threatening fish populations, recreation, and other ecosystem services provided by the water bodies. Pipeline damage will also interrupt wastewater collection services for customers within the Happy Camp Sanitary District.

PROJECT GOALS

1. Protect public health
2. Protect native salmonids, other wildlife, and their habitats

THE SOLUTION

The Indian Creek Sewer Pipeline Crossing will decommission the existing sewer pipeline and replace it with a new pipe crossing and infrastructure.

PROJECT IMPLEMENTATION

This project will be implemented as follows:

1. Temporary use of bridge scaffolding, placement and removal of a temporary sewer bypass, pump, and appurtenances
2. Replace and relocate the existing crossing
 - » New sewer bridge pipeline crossing
 - » New sewer lift station structure and equipment
 - » New sewer lift station electrical equipment and controls
 - » New sewer lift station emergency generator
 - » New underground sewer main
 - » New sewer connections to existing system
3. Abandon existing sewer siphon and sewer main crossing
4. New fencing and gates
5. Erosion and sediment control
6. Final inspection and project closeout

COMPLETION DATE

Ongoing

PROJECT BUDGET

IRWM funds:	\$ 542,000
Leveraged funds:	\$ 375,065
TOTAL	\$ 917,065

BENEFITS

Economic

- Approximately \$1,010,300 in avoided costs associated with emergency repair

- Up to \$150,000 in avoided costs associated with administrative civil liability action fines for unauthorized discharge of sewage into Indian Creek

Water Quality

- Avoided impacts to water quality from sewage discharge into Indian Creek

Watershed Rehabilitation

- Improved fish and wildlife habitat
 - » Avoided harm to salmonid and other wildlife from pipeline failure

Cultural

- Cultural value of salmonid populations that are protected from pipeline failure outside of the cultural framework and economic terms often imposed by western society

Jobs and Local Economy

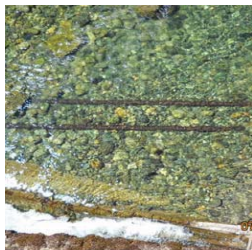
- Over \$ 917,000 was spent locally using local labor and supplies when possible, thus contributing to State goals for environmental justice and social equity
- Avoided costs of a service disruption when the pipeline fails
- Avoided disruption of recreation activities at the Indian Creek-Klamath River confluence, which is a popular white-water rafting location

NEXT STEPS & RECOMMENDATIONS

The Happy Camp Sanitary District will continue to maintain and monitor the new pipeline and associated infrastructure to ensure public health in this economically disadvantaged community and protect vital salmonid and other wildlife habitat.

CONTACT

Gary Hahn
Happy Camp Sanitary District
Happy Camp, CA 96039
530.493.5293



NORTH COAST RESOURCE PARTNERSHIP