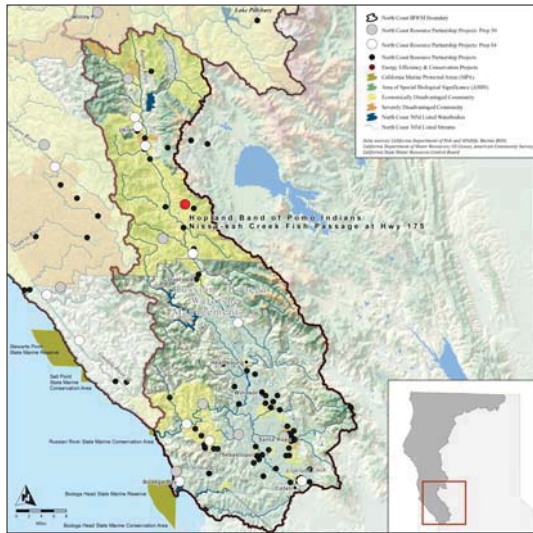


Angelica Creek Fish Passage

HOPLAND BAND OF POMO INDIANS



STATEMENT OF THE PROBLEM

The Hopland Reservation contains two headwater streams which are tributary to the Russian River watershed. These creeks historically supported a vibrant salmonid population of steelhead trout, which is important to the spirituality, nourishment and cultural preservation of the Hopland Tribe. Recent observations indicate a decline in salmonid populations of the North Coast, including the Hopland Reservation. Viable salmonid populations are known indicators of a healthy watershed and are at the risk of extinction along the North Coast.

PROJECT GOALS

Restore viable populations of steelhead trout on the Hopland Reservation.

THE SOLUTION

This project consists of building fish passage improvement for one culvert on Angelica Creek that has been identified as a major impediment to steelhead migration.

PROJECT IMPLEMENTATION

1. Replacing an undersized box culvert with a larger 3 sided box culvert to enable upstream and downstream fish passage
2. Installing an additional 3 sided Culvert near the headwaters of Angelica Creek
3. Riparian restoration and planting of native plants on Angelica Creek
4. Installing rip-rap at erosion sites

COMPLETION DATE

Ongoing

PROJECT BUDGET

JRW funds:	\$ 803,000
Leveraged funds:	\$ 50,237
TOTAL	\$ 853,237

BENEFITS

Watershed Rehabilitation

- Improved fish and wildlife habitat
 - » Culvert removal will allow steelhead migration past former barriers, increasing the amount of high-quality spawning and rearing habitat available by two miles, creating conditions that will support an increased steelhead population

Cultural and Social

- An increase in steelhead populations has a cultural value apart from the cultural framework and economic value often imposed by western society

- Increasing steelhead populations on the Hopland reservation helps to preserve the cultural heritage of the Pomo Tribe

Jobs and Local Economy

- Local labor and supplies will be used when possible, thus contributing to State goals for environmental justice and social equity
- An increase in steelhead in Angelica Creek will improve the overall Russian River watershed steelhead fishery, contributing to the recreational fishing industry

NEXT STEPS & RECOMMENDATIONS

The Hopland Tribe is working to restore their culture, lands and waters. In 2005 they identified restoration of steelhead as a high priority in their Environmental Master Plan. They will continue to seek funding for and implement projects that advance this goal.

CONTACT

Terri McCartney
Hopland Band of Pomo Indians
Hopland, CA 95449
707.472.2100



NORTH COAST RESOURCE PARTNERSHIP