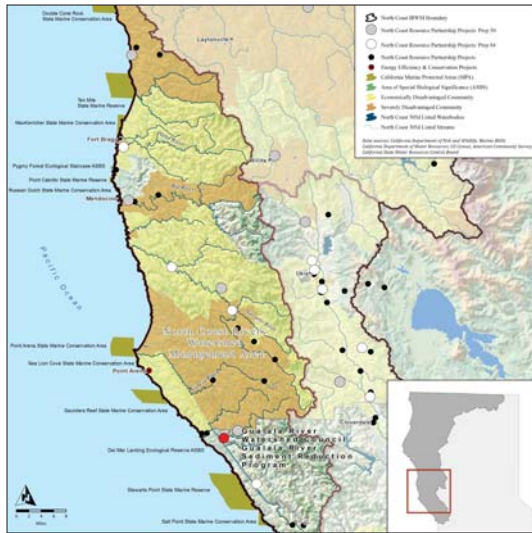


Gualala River Sediment Reduction Program

GUALALA RIVER WATERSHED COUNCIL



STATEMENT OF THE PROBLEM

The USEPA Clean Water Act §303(d) lists the Gualala River as an impaired water body due to excessive sedimentation and high water temperature, which has resulted in declines in salmonid populations. In 2003 the Gualala River Technical Support Document (TSD) estimated that the Gualala River watershed's present erosion rate was 1,220 t/mi²/yr, with a background erosion rate of 380 t/mi²/yr. Newer sediment source assessments conducted at the scale of planning watersheds in the Gualala are consistent with the TSD finding. The Gualala River TSD finds that road-related erosion accounts for 58 percent of the total estimated watershed erosion rate and 85 percent of the anthropogenic portion of the estimated erosion rate.

- Estimated \$26,700 per year for avoided costs associated with reduced road maintenance
- Estimated \$113,800 per year in passive use value associated with enhanced riparian forest habitat over the next 50 years

Watershed Rehabilitation

- Improved fish and wildlife habitat
 - » Improved instream habitat on 12.9 miles of blue line streams
 - » By removing sediment, restoring riparian habitat, and improving habitat for aquatic species the project will directly benefit salmonid habitat

Water Quality

- By treating sediment sources on high and medium priority road networks the project will prevent 25,827 cubic yards of sediment (or 1,464 tons per year) from entering 12.9 miles of watercourses in the Lower Rockpile basin

Cultural

- Increases in salmonid populations have an intrinsic value outside the cultural framework and economic terms often imposed by western society

Jobs and Local Economy

- Over \$500,000 will be spent locally using local labor and supplies when possible, thus contributing to State goals for environmental justice and social equity
- Assist in maintaining and creating 5 to 10 jobs within the community.
- By reducing sediment, restoring riparian habitat, and improving instream habitat for aquatic species on 12.9 miles of streams, the project will help remediate impacts of declines in salmonid populations and restore recreational fisheries

NEXT STEPS & RECOMMENDATIONS

The Gualala River Watershed Council will continue to seek funding for and implement projects that reduce sedimentation and improve habitat in the Gualala River watershed.

CONTACT
Kathleen Morgan
Gualala River Watershed Council
Gualala, CA 95445
707.884.9166

PROJECT GOALS

1. Improve water quality and quantity in the Gualala River watershed
2. Work towards TMDL goal attainment

THE SOLUTION

Gualala River Watershed Council will collaborate with landowners to treat sediment sources on high and medium priority road networks to prevent sediment from entering the watercourses in the Lower Rockpile basin, a highly erosive area with excessively high in-stream sediment deposits in the Gualala River Watershed.

PROJECT IMPLEMENTATION

1. Conduct supplementary inventory assessment using GRWC database as a starting point. Confirm or reprioritize site needs based on assessment.
2. Site specific plans and specifications
3. Environmental documentation and permitting
4. Project construction
5. Final inspection and project closeout
6. Project monitoring and effectiveness assessment

PROJECT BUDGET

IRWM funds: \$ 259,000
Leveraged funds: \$ 280,280
TOTAL \$ 539,280

BENEFITS

Economic

- Estimated \$11,419 annually for avoided costs associated with sediment deposition
- Estimated \$14,490 annually for avoided emergency repair costs associated with culvert failures



NORTH COAST RESOURCE PARTNERSHIP