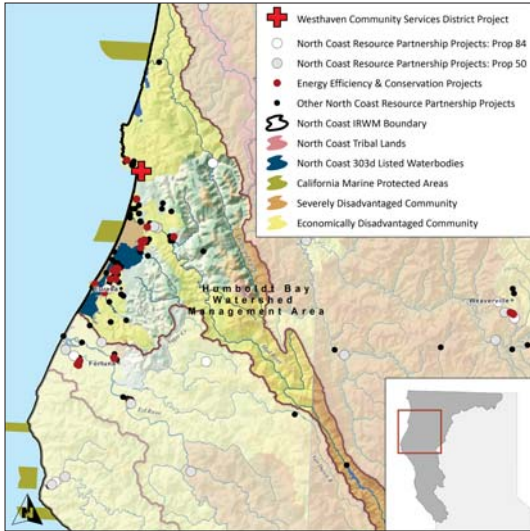


Water Storage Tank and Roof Replacement Project

WESTHAVEN COMMUNITY SERVICES DISTRICT



COMPLETION DATE

October 15, 2017

STATEMENT OF THE PROBLEM

The wood trusses supporting the roof of Westhaven Community Service District's storage tank are rotting and subject to failure during an earthquake. Should the roof fail, the District's sole source of drinking water would be contaminated and their system storage would be eliminated. The California Department of Public Health has determined that the failing roof is a potentially serious system health hazard and should be replaced as soon as possible. Roof failure would also affect emergency storage and flows related to tank/system equalization and fire protection. In addition, WCSD has extremely high levels of carcinogens in their distribution system.

PROJECT GOALS

- Ensure water supply reliability for the community of Westhaven
- Improve drinking water quality

THE SOLUTION

This project will construct a new roof to protect treated water in the existing tank from possible contamination and install a second tank to bolster water supply reliability and allow the original tank's roof repair.

PROJECT IMPLEMENTATION

This project is expected to be completed in 2017.

PROJECT BUDGET

IRWM funds: \$ 151,500
TOTAL \$ 151,500

BENEFITS

Economic benefits

- An estimated one-time cost of \$60,000 in avoided costs of treating unpotable water to drinking water standards if the roof fails and the existing tank's water is unusable
- About \$180,000 yearly in avoided costs associated with purchasing drinking water when water quality is poor
- About \$300 per year in avoided costs of issuing Boil Water notices when water quality is poor
- Approximately \$6,525 in avoided costs of emergency repairs

Water Quality

- Improved drinking water quality

Water Supply

- Approximately 0.26 acre-feet per year of new water supply from the new tank

Cultural benefits

- Increased fire safety; the new tank will bring the District into compliance with fire and emergency reserve standards
- Conflict reduction between the District and the regulatory community
- Community resiliency to challenges associated with climate change, such as extended drought conditions and severe weather

Jobs and Local Economic Benefits

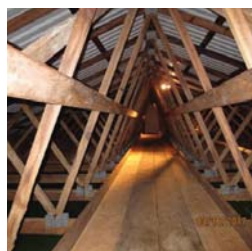
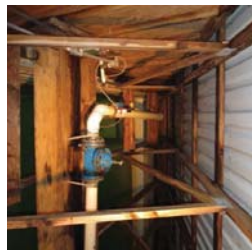
- Over \$150,000 spent locally using local supplies and labor when possible
- About 1 job created/maintained

NEXT STEPS

The Westhaven CSD will continue to seek funding to repair aging infrastructure and improve water quality and water supply reliability for the community of Westhaven.

CONTACT

Richard Swisher
 General Manager
 RSwisher.WCSD@suddenlinkmail.com
 707.677.0798



NORTH COAST RESOURCE PARTNERSHIP