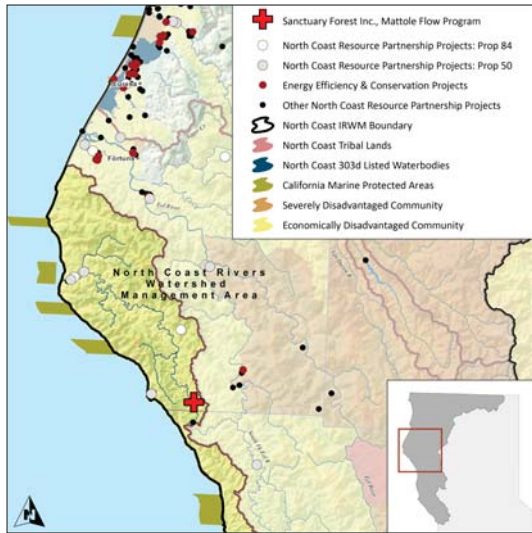


Mattole Flow Program: Mainstem & Tributary Storage and Forbearance

SANCTUARY FOREST, INC.



COMPLETION DATE

May 31, 2020

STATEMENT OF THE PROBLEM

Local water resources in the state-recognized Disadvantaged Community of Whitethorn have been impacted by climate change and drought for 12 out of the last 16 years. The Mattole River headwaters are both the water supply for residents and businesses and the habitat for endangered salmonids and other wildlife. In low flow years there is not enough water for basic human needs. Diversions during low flows result in drying of pools and loss of juvenile salmonid populations. There is no municipal water system and each landowner is on their own to develop their water diversion and supply system.

PROJECT GOALS

- Water supply reliability for human and wildlife communities in the Mattole Headwaters region
- Habitat improvement for listed salmonids
- Increased community capacity to respond to challenges associated with climate change

THE SOLUTION

This project improves summertime streamflows in the Mattole River headwaters by seasonally limiting diversions through storage and forbearance, thereby increasing water quantity, improving water quality, enhancing rearing requirements, and facilitating fish passage. The water conserved includes conservation improvements and leak-proofing, together with tank storage and cessation of all diversions during summer low flows. The project provides water security for institutional and residential use in a rural community that is completely dependent on surface water diversions.

PROJECT IMPLEMENTATION

Project planning and design has been completed. Construction activities began in July 2016 and are scheduled to be completed by March 2019.

PROJECT BUDGET

IRWM funds:	\$ 270,750
Leveraged funds:	\$ 112,500
TOTAL	\$ 383,250

BENEFITS

Water Quality

- Improved instream water quality during summer months; increased flow will help to lower water temperature and increase Dissolved Oxygen

Water Supply

- About 0.61 acre-feet per year in new water supply due to construction of water storage tanks

Habitat and Ecosystem function benefits

- Species protection of coho salmon (*Oncorhynchus kisutch*), steelhead (*Oncorhynchus mykiss*), and Chinook (*Oncorhynchus tshawytscha*), which will benefit through increased instream flows during critical summer months
- Increased instream flow of up to 0.9 cubic feet per seconds during critical summer months
- Habitat and fish passage improvement in 5.5 miles of mainstem and tributaries

Cultural benefits

- Community resiliency to climate change through increased awareness of drought effects, alternative water supply sources, and methods to conserve water
- Increased firefighting capacity due to local water storage

Jobs and Local Economic Benefits

- An estimated \$383,000 spent locally using local supplies and labor when possible
- About eight jobs created/maintained

NEXT STEPS

Sanctuary Forest will continue its efforts to promote resiliency to climate change impacts in the Mattole River watershed for both human and wildlife communities.

CONTACT

Tasha McKee McCorkle
Water Program Director
Tasha@SanctuaryForest.org
707.986.1087 ext 2#

ACKNOWLEDGEMENTS

Sanctuary Forest acknowledges the many partners and funders who are instrumental for development and implementation of the Mattole Flow program- a voluntary community based program to increase drought resilience and water supplies for human and wildlife communities.

Key partners include: California Department of Fish and Wildlife, California State Water Resources Control Board, Trout Unlimited, Salmonid Restoration Federation, Mattole Restoration Council and Mattole Salmon Group.

Funders include:

- California Department of Fish and Wildlife
- California State Water Resources Control Board
- National Fish and Wildlife Foundation
- National Oceanic and Atmospheric Administration
- Bella Vista Foundation
- California State Coastal Conservancy
- Bureau of Land Management
- US Fish and Wildlife
- California Wildlife Conservation Board
- Humboldt Area Foundation
- Department of Water Resources
- Kenny Brothers Foundation
- Fish America Foundation
- Firedoll Foundation
- McLean Foundation
- Patagonia Foundation
- Weeden Foundation
- Cereus Fund
- Anadromous Fund
- Pacific Coast Joint Venture
- Grace Us Foundation
- Sanctuary Forest Donors
- Participating Landowners

