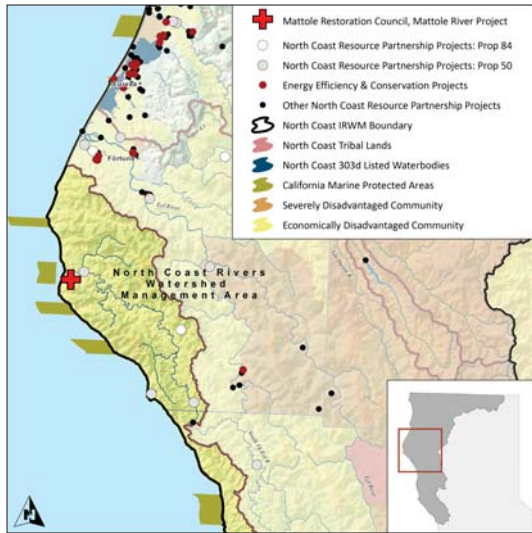


# Lower Mattole River and Estuary Enhancement and Drought Resiliency Project

MATTOLE RESTORATION COUNCIL IN COOPERATION WITH MATTOLE SALMON GROUP



## COMPLETION DATE

October 31, 2019

## STATEMENT OF THE PROBLEM

Historic logging and 100 year flood events have impacted habitat conditions throughout the lower Mattole River. Currently, summer habitat conditions in the lower river and estuary are generally poor for juvenile Pacific salmon. The area is broad, shallow, and lacks complex habitats for fish to hide from predators. Many of the riparian floodplains are void of long-lived riparian tree species that provide shade, floodplain stability, and future wood recruitment. Summer water temperatures regularly exceed levels thought to be lethal to Pacific salmon.

## PROJECT GOALS

- Improve salmonid habitat
- Restore and protect wetlands
- Improve drought resiliency in the lower river and estuary

## THE SOLUTION

This project will implement three major components. Component 1 consists of riparian and floodplain restoration, Component 2 involves in-stream and flood plain habitat enhancement, and Component 3 consists of estuary slough restoration.

## PROJECT IMPLEMENTATION

Project implementation has begun and will continue through August, 2019. The project will restore ecosystem processes to the Mattole estuary and lower Mattole River while enhancing habitat for fish and wildlife by installing riparian plants, treating terrace margin and eroding streambank with whole tree stream barbs, installing livestock exclusion fencing, removing invasive plants, and using a helicopter to place whole trees, with rootwads and limbs, as large woody debris in the estuary. Once completed, this project will restore approximately 50 acres of habitat.

## PROJECT BUDGET

IRWM funds:	\$ 491,100
Leveraged funds:	\$ 752,168
<b>TOTAL</b>	<b>\$ 1,243,269</b>

## BENEFITS

### Economic benefits

- Approximately \$6,000 per year in benefits associated with riparian restoration

### Habitat and Ecosystem function benefits

- Approximately 40 acres of riparian forest will be planted, 10 acres of

invasive species removal will be conducted, and 15 pools will be created to enhance instream habitat

- Species protection for coho (*Oncorhynchus kisutch*), Chinook salmon (*Oncorhynchus tshawytscha*), and steelhead (*Oncorhynchus mykiss*)

### Jobs and Local Economic Benefits

- Over \$1.2 million spent locally using local supplies and labor when possible
- Approximately 8 jobs created/maintained

## NEXT STEPS

The Mattole Restoration Council in cooperation with the Mattole Salmon Group will continue to implement recommendations in the Mattole Watershed Assessment Report and the BLM Mattole Estuary Restoration Plan 2012–2017 to increase pool depth, cold water available to juvenile salmon, cover, and habitat complexity for the restoration of the estuary/lagoon.

### CONTACT

Cassie Pinnell  
Executive Director  
Cassie@Mattole.org  
707.629.3514

### ACKNOWLEDGEMENTS

- Cooperators:
- Mattole Salmon Group
  - Bureau of Land Management
  - CA Department of Fish and Wildlife
  - USFWS
  - NOAA and TNC and NFWF and the SCC

