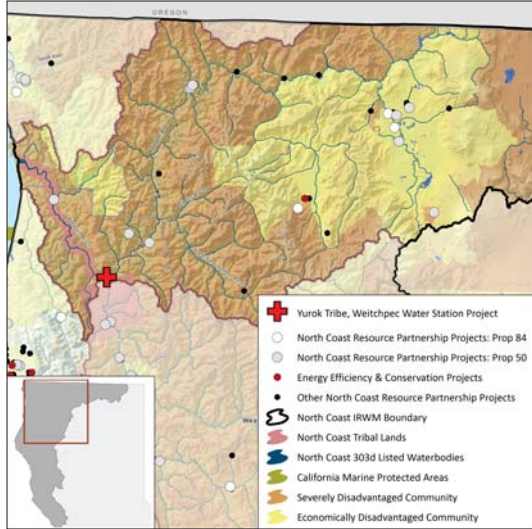


# Weitchpec Water Station

YUROK TRIBE



## COMPLETION DATE

September 1, 2017

## STATEMENT OF THE PROBLEM

The Weitchpec Community Water system is a surface water system fed to a gravity sand filter, then to distribution lines. Low flows resulting from drought conditions, coupled with illegal diversions have created major health and safety concerns for the community, because when creek flow is low, water quality is poor and the increased turbidity and organics require higher levels of disinfection products that can impact health when they react with chlorine. Additionally, the limited water supply limits Tribal capacity for fire suppression.

## PROJECT GOALS

- Develop well water to provide water supply reliability
- Improve firefighting capacity

## THE SOLUTION

Development of the Weitchpec Water Station, which will consist of a well, a small water tank and spigot for emergency access, a flush hydrant to fill fire trucks, and a direct line to the existing distribution system. This systems will eventually replace the existing surface water system to provide a clean, reliable drinking water source for the Weitchpec community.

## PROJECT IMPLEMENTATION

The Water Station provides reliable, safe drinking water to the Weitchpec community as well as emergency water and fire protection to the upriver Tribal community.

## PROJECT BUDGET

IRWM funds: \$ 201,770  
 Leveraged funds: \$ 94,306  
**TOTAL \$ 296,076**

## BENEFITS

### Economic benefits

- Approximately \$12,000 per year in increased instream flow for environmental purposes
- An estimated \$1,920 in increased water supply reliability at least once every five years due to illegal diversions and expected weather patterns
- About \$1,728 in avoided water supply purchases at least once every five years due to illegal diversions and expected weather patterns
- An estimated \$10,875 at least once every five years due to illegal diversions and expected weather patterns

## Water Quality

- Improved water quality due to the use of good quality groundwater

## Water Supply

- Water supply reliability

## Habitat and Ecosystem function benefits

- Increased instream flow will provide increased cold water to feed the Klamath River for improved habitat: reduced stagnant, warm, oxygen-depleted water.

## Cultural benefits

- Increased climate change resiliency for Weitchpec, a community disproportionately at risk from climate change due to being highly dependent on land and natural resources for livelihoods, and social and cultural systems

## Jobs and Local Economic Benefits

- Nearly \$300,000 spent locally using local supplies and labor whenever possible
- Approximately 1 job created/ maintained

## NEXT STEPS

The Yurok Tribe will continue to work towards water supply reliability for Tribal communities and for increased habitat quality for salmonids and other wildlife inhabiting the Klamath River watershed.

### CONTACT

Nicole Sager  
 Senior Planner  
 Nwright@yuroktribe.nsn.us  
 707.482.1350 X 1358

### ACKNOWLEDGEMENTS

Indian Health Services – Arcata Branch  
 Klamath Trinity Joint Unified School District  
 GHD Engineering

