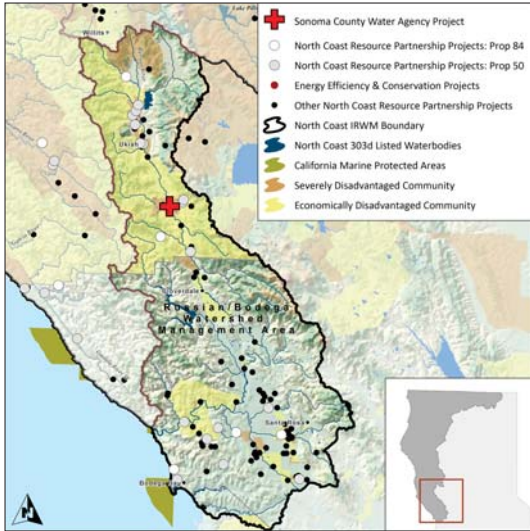


Sonoma-Mendocino Immediate Drought Relief Project

SONOMA COUNTY WATER AGENCY



COMPLETION DATE

January 31, 2018

STATEMENT OF THE PROBLEM

Sonoma and Mendocino counties are facing drought conditions after two consecutive dry years and the driest year on record in 2013. The need for water efficiency has never been greater. Conserved water is the least costly source of “new” water. Communities need to be prepared for drought scenarios over the long-term. An aggressive conservation program is essential to increase water supply and reduce strains on Lake Mendocino.

PROJECT GOALS

- Invest in water conservation strategies in vulnerable, drought-prone communities
- Increase water conservation among rural residential and commercial customers
- Promote water efficient landscaping practices

THE SOLUTION

The project implements BMPs through a high-efficiency fixture direct-install component and a turf replacement component. Project elements include converting high-water-use landscaping (turf) to climate appropriate plant material (low water use plants) and providing free, professionally installed, high efficiency plumbing fixtures (toilets, urinals, showerheads, kitchen faucet aerators and bath faucet aerators). The indoor component addresses 75% of total indoor water use (showers 20%, faucets 18%, toilets 20%, and leaks 18%). The outdoor component addresses 50% of total water use and directly reduces peak demand. High levels of participation are expected based on past programs, and the project focuses on drought-affected areas that have not implemented water conservation programs.

PROJECT IMPLEMENTATION AND ACCOMPLISHMENTS

As of January 31, 2017, 894 high-efficiency toilets and urinals have been installed and 183,810 square feet of turf have been removed and converted with low water use plants.

PROJECT BUDGET

IRWM funds:	\$ 1,050,000
Leveraged funds:	\$ 635,000
TOTAL	\$ 1,685,000

BENEFITS

Economic benefits

- An estimated \$12,080 per year in increased instream flow for environmental, agricultural and municipal purposes through 2025 when an alternative project would begin to accrue these benefits
- Approximately \$228,000 per year in increased water supply reliability
- Approximately \$3,780 in avoided water shortage costs
- An estimated \$1,475 yearly in avoided electric costs
- Approximately \$15,900 in increased quantity/quality of recreation/ public access through 2017, when the alternative project would take effect
- About \$4 million in avoided water supply projects through project implementation

Water Supply

- 151 acre-feet of increased instream flow for environmental, agricultural, and municipal purposes
- 4,000 households with increased water supply reliability

Habitat and Ecosystem function benefits

- Carbon emissions reductions of about 2 tons CO₂ per year

Jobs and Local Economic Benefits

- Over \$1.5 million spent locally using local supplies and labor when possible
- Approximately 2 jobs created/ maintained

NEXT STEPS

The Sonoma County Water Agency will continue to collaborate with cities and towns within its jurisdiction, neighboring water agencies and regulators to implement conservation measures that improve water supply reliability and enhance ecosystem services.

CONTACT

Carrie Pollard
Principal Programs Specialist
Carrie.Pollard@scwa.ca.gov
707.547.1968



NORTH COAST RESOURCE PARTNERSHIP